



Summary of 2002 Community Assessment Findings

A project of
The Caring Community Network
Of the Twin Rivers



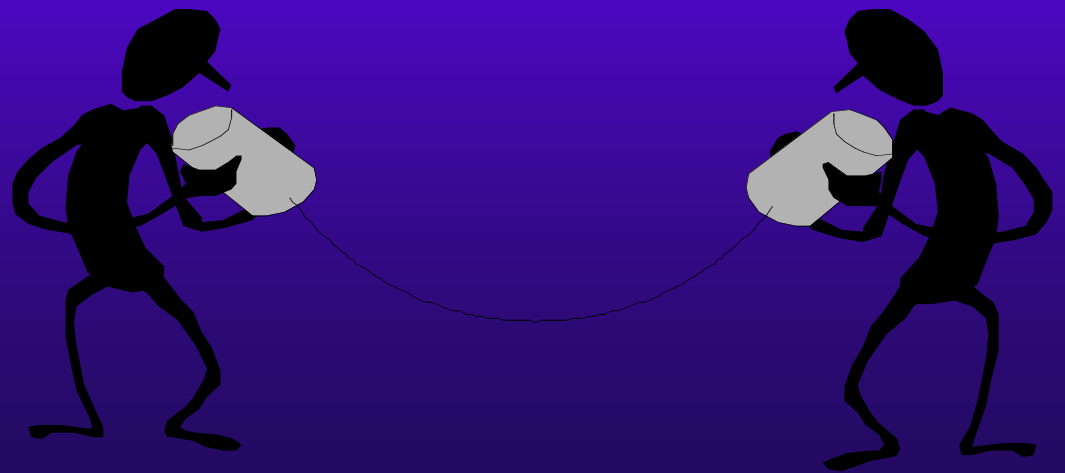
Where did it come from?

- ◆ Analyzed statistical data
 - By town, for Twin Rivers, for HSA, by state
- ◆ Surveys
 - 469 responses
- ◆ Community forums
 - 11 forums in 5 communities
- ◆ Interviews



What did we ask about?

- ◆ Community and Economics
- ◆ Health, Safety and Social Services





*And this is what we heard
about.....*



Community and Economics

Community Assets

- ◆ People
- ◆ Natural Beauty
- ◆ Economic and community development projects (Opera House, Trails, Main Street)
- ◆ Cooperation



Economic Challenges

Residents are concerned about poverty in their community

- ◆ 24.1% of residents in the Twin Rivers lives at or below 200% of Federal poverty guidelines
 - Equates to: \$36,200 for a family of 4



Economic Challenges

- ◆ A lack of local employment opportunities concerned residents.
- ◆ Residents are interested in more educational and job training opportunities



Transportation

- ◆ Lack of transportation is a concern to 30.1% of survey respondents
- ◆ 38.6% said it was hard to get to stores to buy necessities

“Getting to services is one of the hardest things about living in my community.”



Housing

- ◆ Lack of quality, affordable housing
 - Especially for seniors and low-income families
- ◆ There is no emergency housing
 - For men, women, and teens



Working Together

- ◆ More ways for people to come together in the community
- ◆ Improve relationships among municipalities, businesses, and schools
- ◆ Encourage community leadership & involvement
- ◆ Arts and recreational opportunities



Working Together

- ✦ Combat negative attitudes about the community
- ✦ Negative attitudes about the community is one of the most difficult thing about living in their town

“The people who put down their community should put their energy into helping the groups that are trying to make a difference.”





So,
What are
we doing
about it?



Economic Challenges

Franklin Asset Building Coalition

- Help people claim their tax credits
- Promote smart spending and saving



Transportation

Transportation Resource Directory

Research and assessment of type and extent of need

Working together to find collaborative solutions



Housing

Housing study planned

- Identify extent of needs
- Explore links between health and housing
- Educate tenants, landlords, and policy makers
- Find collaborative solutions



Working Together

CCNTR is a founding member of the
Winnepesaukee River Trails Association,
which promotes local economic
development by improving and beautifying
the area.





*And this is what we heard
about.....*



Health and Social Services

Health Care Assets

- ◆ Residents feel they are in good health
 - 68.7% felt in ‘good’ or ‘very good’ health
- ◆ Residents are confident in their town’s services (EMS, Fire, Public Assistance)
- ◆ Residents appreciate their health and human service providers



Barriers to health care

◆ Geographic

- The Twin Rivers is part of a Health Provider Shortage Area (HPSA)
- The average distance a person has to travel for primary care services is 23 miles
- The doctor to consumer ratio for this region is 1:3,828



Barriers to health care

Economic

- ◆ Inability to pay for services
 - Limited insurance, or not accepted by physician
 - No insurance
- ◆ High cost of prescription medication



Dental Care

- ◆ Residents are concerned about their ability to get dental services
- ◆ Residents report having trouble getting dental services in the last 12 months



Mental Health

- ◆ 1/3 of the people asked were concerned about depression, anxiety, and related issues
- ◆ People also were concerned about:
 - Access to crisis care
 - Mental health care for youth
 - Treatment options for chronic mental health conditions





Health Education and Fitness

- ◆ Stress management classes
- ◆ Weight management
 - fitness programs & nutrition programs
- ◆ Education on:
 - Cancer
 - High blood pressure
 - Diabetes
 - Asthma



Senior Issues

- ◆ People said they don't know where or how to access services
- ◆ Wanted more recreational and fitness activities for seniors
- ◆ Concerned about medication and health care costs

“Being a senior in the Twin Rivers is not for sissies.”



Senior Issues

- ◆ Seniors in the Twin Rivers area are hospitalized more often than the statewide average for:
 - Accidental injuries
 - Chronic conditions like diabetes
 - Acute conditions like asthma





Infant and Prenatal Health

- ◆ Franklin Health Service Area ranks:
 - Highest rate in state of low birth weight births
 - Highest rate in state of women who smoke during pregnancy
 - Highest rate in the state of women who entered prenatal care late, or not at all



Youth Issues

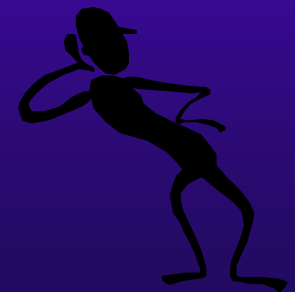
Residents are concerned about:

- Risky behavior and delinquency
- A lack of positive activities for youth
- Use of substances by minors.
- Child abuse and family violence
- The lack of affordable, quality childcare locally



Water Quality

- ◆ Drinking water quality was the greatest concern about the environment to most respondents





So,
What are
we doing
about it?



Health Care

Health First Family Care Center

Drug Assistance Program

HealthLink

Care Coordination Teams

Electronic 'Toolbox'



Dental Care

Dental Outreach Program

Lakes Region Dental Resource Center



Health Education and Fitness

Healthy Heart Program

Asthma and Diabetes management
classes



Senior Issues

TRIP Center

Outreach to isolated adults

Care Coordination Teams



Infant and Prenatal Health

Free and comprehensive prenatal care
to women on Medicaid

Health Families home-visiting
program



Youth Issues

In-school prevention programs

After-school programs

ADAPT -- the Alcohol & Drug Abuse
Prevention Team, a task team of CCNTR.

The Franklin Children's Care Team



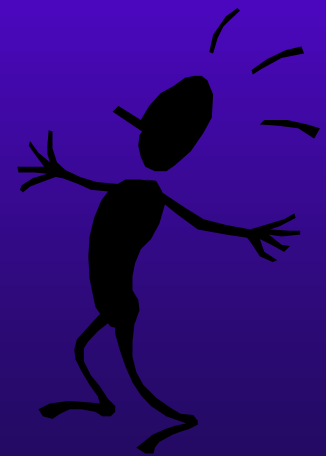
Water Quality

CCNTR has hired a Public Health Consultant to work with municipalities and local public health officers to address public health issues like these, and others in the Twin Rivers.



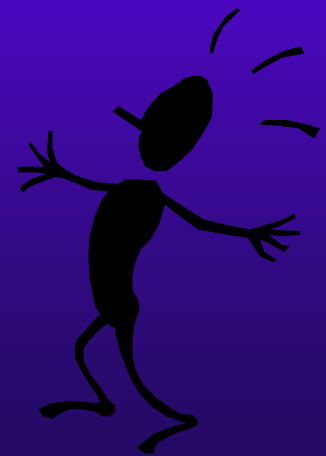
Conclusion

- ◆ Like many communities in NH:
 - Residents are concerned about economics, job opportunities, and taxes
 - The Twin Rivers is concerned for the well being of children and elderly



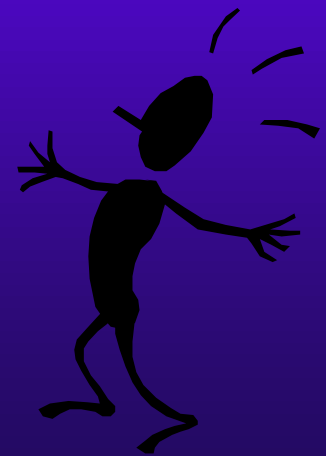
Conclusion

- ◆ Consistent with national trends:
 - The region struggles with limited access to health care, mental health services, dental care, and prescription medications



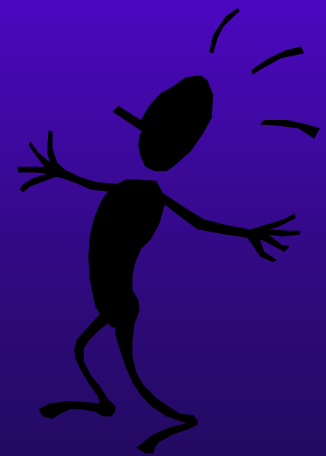
Conclusions

- ◆ The region has **MANY ASSETS!**
 - Beauty
 - Caring people
 - Cooperation



Conclusions

There are many opportunities emerging to address these issues, and the Twin Rivers region is in an excellent position to take advantage of them.





Caring Community Network of the Twin Rivers

Ask How You Can Get Involved!

Contact us at: 934-0177